

## DYMET ALLOYS SAW TIPS

Dymet Alloys offer a range of 'Ready to Braze' Tungsten Carbide Saw Tips.



- ◆ Grades:  
Standard 6% cobalt.  
Steel cutting and alternative grades available to special order.
- ◆ Quantity:  
Saw Tips are available in multiples of 500-off.  
Please note our minimum order value £50-00.
- ◆ Sizes:  
Kerf sizes in the price list are usually ex-stock.  
Other sizes available to special order, price on request.

Dymets Alloys specialise in manufacturing tungsten carbide products to individual customer specification. Other products / applications include Wear blocks, Bandsaw blade guides, shaped tips for cutter blades, cutters / burs and drills.



## DYMET ALLOYS SAW TIP PRICE LIST

**Grades:**

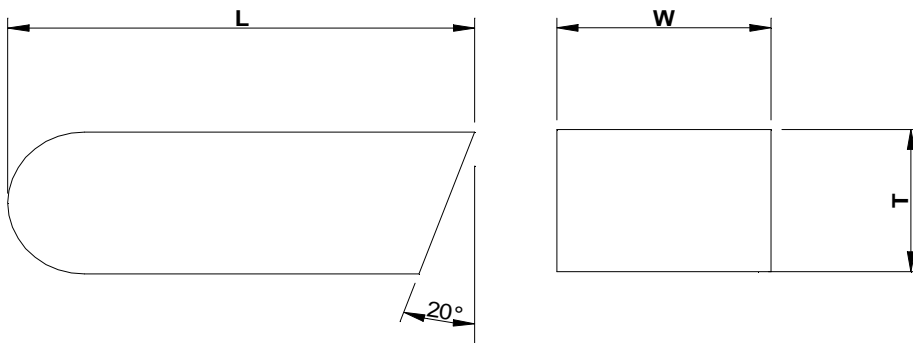
Standard 6% cobalt.  
Steel cutting and alternative grades available to special order.

**Quantity:**

Saw Tips are available in multiples of 500-off.  
Please note our minimum order value £50-00.

### A-SERIES SAW TIPS READY TO BRAZE (dimensions in mm)

DYMET CODE	Length	KERF Width	Thickness	500-2000	2500-5000	>5500
A-085	9.5	2.1	3.2	£0.147	£0.124	£0.116
A-095	9.5	2.4	3.2	£0.154	£0.130	£0.123
A-105	9.5	2.7	3.2	£0.160	£0.136	£0.129
A-115	9.5	2.9	3.2	£0.164	£0.140	£0.133
A-125	9.5	3.2	3.2	£0.170	£0.147	£0.139
A-135	9.5	3.4	3.2	£0.174	£0.151	£0.143
A-145	9.5	3.7	3.2	£0.181	£0.157	£0.150
A-155	9.5	3.9	3.2	£0.185	£0.161	£0.154
A-165	9.5	4.2	3.2	£0.191	£0.167	£0.160
A-175	9.5	4.5	3.2	£0.197	£0.174	£0.166
A-185	9.5	4.7	3.2	£0.202	£0.178	£0.171
A-195	9.5	5	3.2	£0.208	£0.184	£0.177
A-205	9.5	5.2	3.2	£0.212	£0.188	£0.181
A-215	9.5	5.5	3.2	£0.218	£0.195	£0.187
A-225	9.5	5.7	3.2	£0.222	£0.199	£0.191





## DYMET ALLOYS SAW TIP PRICE LIST

**Grades:**

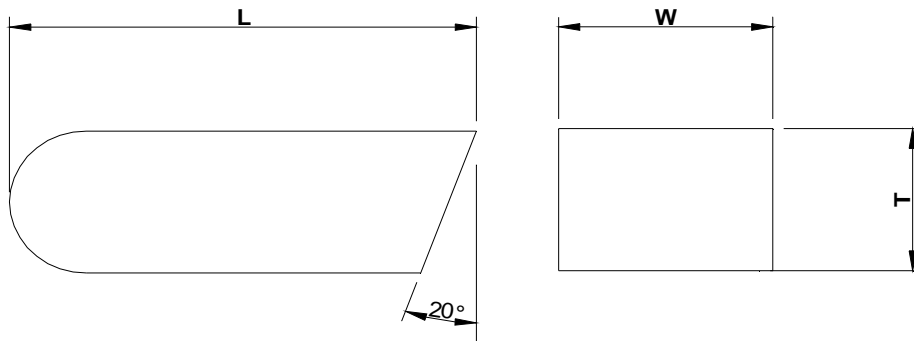
Standard 6% cobalt.  
Steel cutting and alternative grades available to special order.

**Quantity:**

Saw Tips are available in multiples of 500-off.  
Please note our minimum order value £50-00.

### **B-SERIES SAW TIPS READY TO BRAZE** (dimensions in mm)

DYMET CODE	Length	KERF Width	Thickness	500-2000	2500-5000	>5500
B-085	8	2.1	2.6	£0.134	£0.110	£0.103
B-095	8	2.4	2.6	£0.138	£0.114	£0.107
B-105	8	2.7	2.6	£0.142	£0.119	£0.112
B-115	8	2.9	2.6	£0.145	£0.122	£0.114
B-125	8	3.2	2.6	£0.150	£0.126	£0.119
B-135	8	3.4	2.6	£0.153	£0.129	£0.122
B-145	8	3.7	2.6	£0.157	£0.133	£0.126
B-155	8	3.9	2.6	£0.160	£0.136	£0.129
B-165	8	4.2	2.6	£0.164	£0.140	£0.133
B-175	8	4.5	2.6	£0.168	£0.145	£0.138
B-185	8	4.7	2.6	£0.171	£0.148	£0.140
B-195	8	5	2.6	£0.176	£0.152	£0.145
B-205	8	5.2	2.6	£0.179	£0.155	£0.148
B-215	8	5.5	2.6	£0.183	£0.159	£0.152
B-225	8	5.7	2.6	£0.186	£0.162	£0.155





## DYMET ALLOYS SAW TIP PRICE LIST

**Grades:**

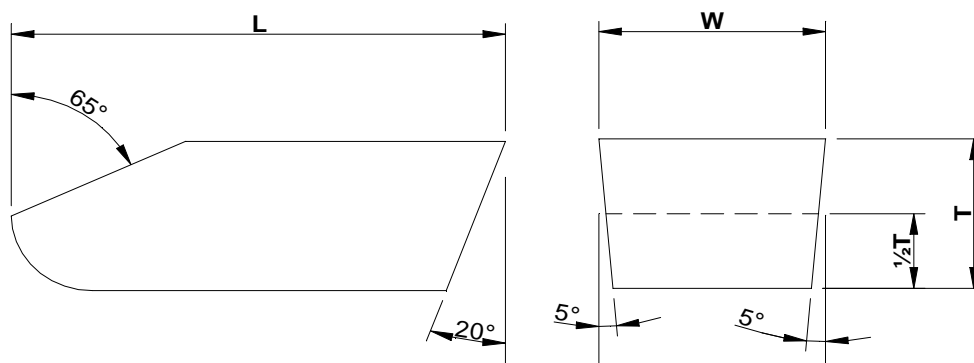
Standard 6% cobalt.  
Steel cutting and alternative grades available to special order.

**Quantity:**

Saw Tips are available in multiples of 500-off.  
Please note our minimum order value £50-00.

### **F-SERIES SAW TIPS READY TO BRAZE** (dimensions in mm)

DYMET CODE	Length	KERF Width	Thickness	500-2000	2500-5000	>5500
F-085	9.5	2.1	3.2	£0.094	£0.072	£0.067
F-095	9.5	2.4	3.2	£0.100	£0.078	£0.073
F-105	9.5	2.7	3.2	£0.106	£0.084	£0.079
F-115	9.5	2.9	3.2	£0.110	£0.088	£0.083
F-125	9.5	3.2	3.2	£0.116	£0.094	£0.089
F-135	9.5	3.4	3.2	£0.120	£0.098	£0.093
F-145	9.5	3.7	3.2	£0.126	£0.104	£0.099
F-155	9.5	3.9	3.2	£0.130	£0.108	£0.102
F-165	9.5	4.2	3.2	£0.135	£0.114	£0.108
F-175	9.5	4.5	3.2	£0.141	£0.120	£0.114
F-185	9.5	4.7	3.2	£0.145	£0.124	£0.118
F-195	9.5	5	3.2	£0.151	£0.129	£0.124
F-205	9.5	5.2	3.2	£0.155	£0.133	£0.128
F-215	9.5	5.5	3.2	£0.161	£0.139	£0.134
F-225	9.5	5.7	3.2	£0.165	£0.143	£0.138
F-235	9.5	6	3.2	£0.171	£0.149	£0.144
F-245	9.5	6.2	3.2	£0.175	£0.153	£0.148
F-255	9.5	6.5	3.2	£0.181	£0.159	£0.154
F-265	9.5	6.7	3.2	£0.185	£0.163	£0.158
F-275	9.5	7	3.2	£0.191	£0.169	£0.164
F-285	9.5	7.2	3.2	£0.195	£0.173	£0.167
F-295	9.5	7.5	3.2	£0.200	£0.179	£0.173
F-305	9.5	7.7	3.2	£0.204	£0.183	£0.177
F-315	9.5	8	3.2	£0.210	£0.189	£0.183





## DYMET ALLOYS SAW TIP PRICE LIST

**Grades:**

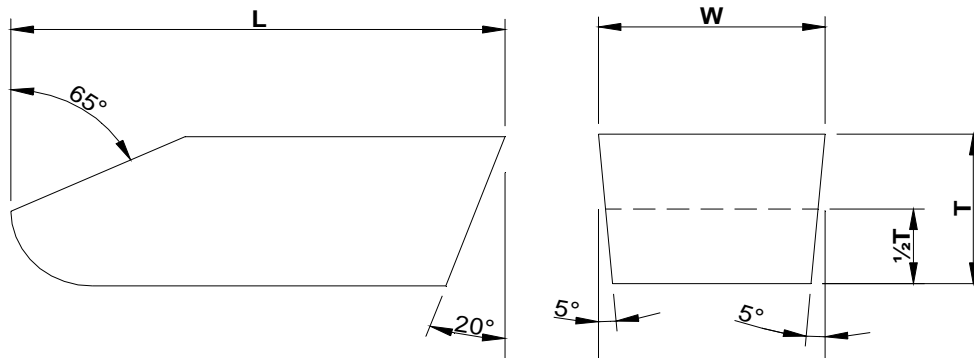
Standard 6% cobalt.  
Steel cutting and alternative grades available to special order.

**Quantity:**

Saw Tips are available in multiples of 500-off.  
Please note our minimum order value £50-00.

### H-SERIES SAW TIPS READY TO BRAZE (dimensions in mm)

DYMET CODE	Length	KERF Width	Thickness	500-2000	2500-5000	>5500
H-085	8	2.1	2.6	£0.081	£0.059	£0.054
H-095	8	2.4	2.6	£0.085	£0.064	£0.058
H-105	8	2.7	2.6	£0.089	£0.068	£0.062
H-115	8	2.9	2.6	£0.092	£0.070	£0.065
H-125	8	3.2	2.6	£0.096	£0.074	£0.069
H-135	8	3.4	2.6	£0.099	£0.077	£0.072
H-145	8	3.7	2.6	£0.103	£0.081	£0.076
H-155	8	3.9	2.6	£0.106	£0.084	£0.079
H-165	8	4.2	2.6	£0.110	£0.088	£0.083
H-175	8	4.5	2.6	£0.114	£0.092	£0.087
H-185	8	4.7	2.6	£0.117	£0.095	£0.090
H-195	8	5	2.6	£0.121	£0.099	£0.094
H-205	8	5.2	2.6	£0.123	£0.102	£0.096
H-215	8	5.5	2.6	£0.127	£0.106	£0.100
H-225	8	5.7	2.6	£0.130	£0.108	£0.103
H-235	8	6	2.6	£0.134	£0.112	£0.107
H-245	8	6.2	2.6	£0.137	£0.115	£0.110
H-255	8	6.5	2.6	£0.141	£0.119	£0.114
H-265	8	6.7	2.6	£0.144	£0.122	£0.117
H-275	8	7	2.6	£0.148	£0.126	£0.121
H-285	8	7.2	2.6	£0.151	£0.129	£0.124
H-295	8	7.5	2.6	£0.155	£0.133	£0.128
H-305	8	7.7	2.6	£0.157	£0.136	£0.130
H-315	8	8	2.6	£0.161	£0.140	£0.134





## DYMET ALLOYS SAW TIP PRICE LIST

**Grades:**

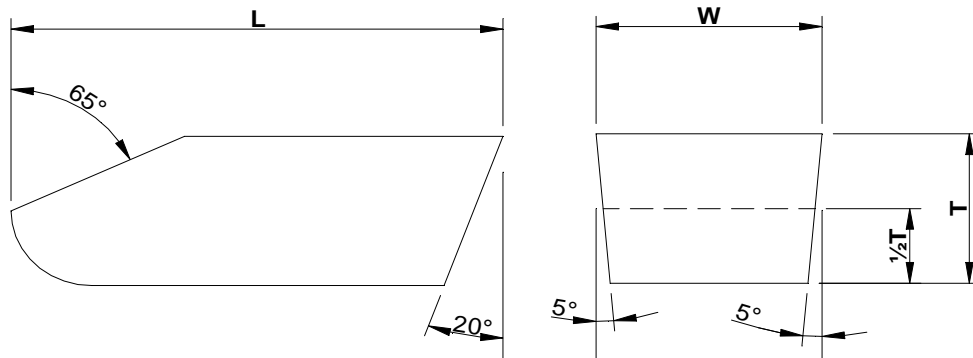
Standard 6% cobalt.  
Steel cutting and alternative grades available to special order.

**Quantity:**

Saw Tips are available in multiples of 500-off.  
Please note our minimum order value £50-00.

### G-SERIES SAW TIPS READY TO BRAZE (dimensions in mm)

DYMET CODE	Length	KERF Width	Thickness	500-2000	2500-5000	>5500
G-085	8.7	2.1	2.6	£0.135	£0.111	£0.104
G-095	8.7	2.4	2.6	£0.140	£0.116	£0.109
G-105	8.7	2.7	2.6	£0.144	£0.120	£0.113
G-115	8.7	2.9	2.6	£0.147	£0.123	£0.116
G-125	8.7	3.2	2.6	£0.152	£0.128	£0.121
G-135	8.7	3.4	2.6	£0.155	£0.131	£0.124
G-145	8.7	3.7	2.6	£0.159	£0.135	£0.128
G-155	8.7	3.9	2.6	£0.162	£0.138	£0.131
G-165	8.7	4.2	2.6	£0.167	£0.143	£0.136
G-175	8.7	4.5	2.6	£0.171	£0.147	£0.140
G-185	8.7	4.7	2.6	£0.174	£0.150	£0.143
G-195	8.7	5	2.6	£0.179	£0.155	£0.148
G-205	8.7	5.2	2.6	£0.182	£0.158	£0.151
G-215	8.7	5.5	2.6	£0.186	£0.162	£0.155
G-225	8.7	5.7	2.6	£0.189	£0.165	£0.158





## DYMET ALLOYS SAW TIP PRICE LIST

**Grades:**

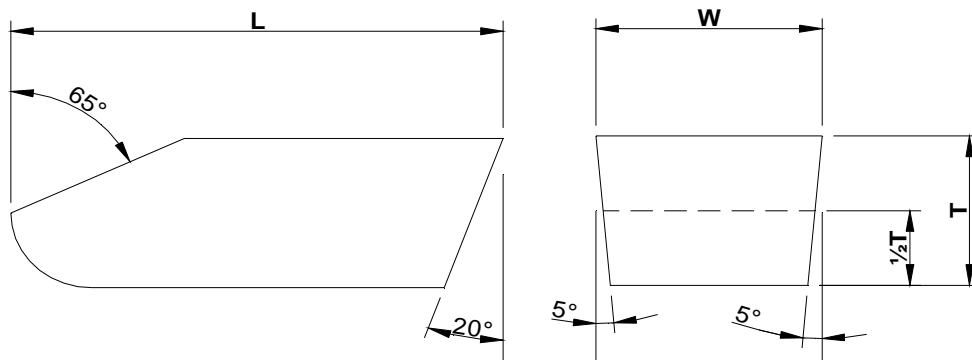
Standard 6% cobalt.  
Steel cutting and alternative grades available to special order.

**Quantity:**

Saw Tips are available in multiples of 500-off.  
Please note our minimum order value £50-00.

### J-SERIES SAW TIPS READY TO BRAZE (dimensions in mm)

DYMET CODE	Length	KERF Width	Thickness	500-2000	2500-5000	>5500
J-085	8	2.1	2	£0.075	£0.053	£0.048
J-095	8	2.4	2	£0.078	£0.056	£0.051
J-105	8	2.7	2	£0.081	£0.060	£0.054
J-115	8	2.9	2	£0.083	£0.062	£0.056
J-125	8	3.2	2	£0.087	£0.065	£0.060
J-135	8	3.4	2	£0.089	£0.067	£0.062
J-145	8	3.7	2	£0.092	£0.070	£0.065
J-155	8	3.9	2	£0.094	£0.072	£0.067
J-165	8	4.2	2	£0.097	£0.075	£0.070
J-175	8	4.5	2	£0.100	£0.079	£0.073
J-185	8	4.7	2	£0.102	£0.081	£0.075
J-195	8	5	2	£0.106	£0.084	£0.079
J-205	8	5.2	2	£0.108	£0.086	£0.081
J-215	8	5.5	2	£0.111	£0.089	£0.084
J-225	8	5.7	2	£0.113	£0.091	£0.086
J-235	8	6	2	£0.116	£0.094	£0.089
J-245	8	6.2	2	£0.118	£0.097	£0.091
J-255	8	6.5	2	£0.122	£0.100	£0.094
J-265	8	6.7	2	£0.124	£0.102	£0.097
J-275	8	7	2	£0.127	£0.105	£0.100
J-285	8	7.2	2	£0.129	£0.107	£0.102
J-295	8	7.5	2	£0.132	£0.110	£0.105
J-305	8	7.7	2	£0.134	£0.112	£0.107
J-315	8	8	2	£0.137	£0.116	£0.110





## DYMET ALLOYS SAW TIP PRICE LIST

**Grades:**

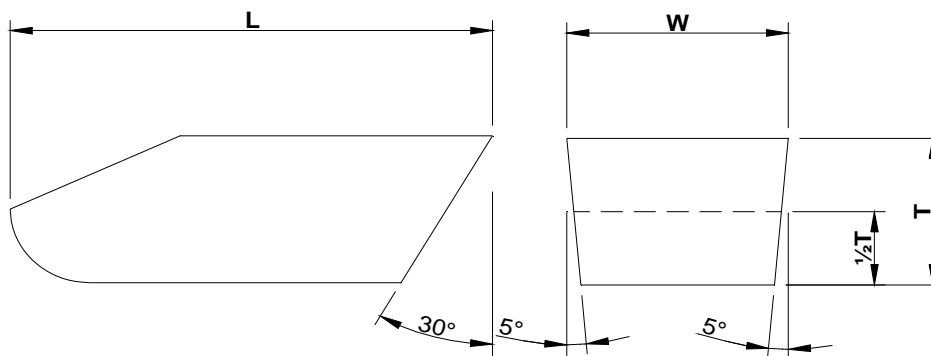
Standard 6% cobalt.  
Steel cutting and alternative grades available to special order.

**Quantity:**

Saw Tips are available in multiples of 500-off.  
Please note our minimum order value £50-00.

### P-SERIES SAW TIPS READY TO BRAZE (dimensions in mm)

DYMET CODE	Length	KERF Width	Thickness	500-2000	2500-5000	>5500
P-125	11	3.2	3.6	£0.129	£0.107	£0.102
P-135	11	3.4	3.6	£0.134	£0.112	£0.106
P-145	11	3.7	3.6	£0.141	£0.119	£0.114
P-155	11	3.9	3.6	£0.145	£0.124	£0.118
P-165	11	4.2	3.6	£0.153	£0.131	£0.125
P-175	11	4.5	3.6	£0.160	£0.138	£0.133
P-185	11	4.7	3.6	£0.164	£0.143	£0.137
P-195	11	4.9	3.6	£0.169	£0.147	£0.142
P-205	11	5.2	3.6	£0.176	£0.155	£0.149
P-215	11	5.4	3.6	£0.181	£0.159	£0.154
P-225	11	5.7	3.6	£0.188	£0.166	£0.161
P-235	11	6	3.6	£0.195	£0.174	£0.168
P-245	11	6.2	3.6	£0.200	£0.178	£0.173
P-255	11	6.5	3.6	£0.207	£0.185	£0.180
P-265	11	6.7	3.6	£0.212	£0.190	£0.185
P-275	11	7	3.6	£0.219	£0.197	£0.192
P-285	11	7.2	3.6	£0.224	£0.202	£0.197
P-295	11	7.5	3.6	£0.231	£0.209	£0.204
P-305	11	7.8	3.6	£0.238	£0.216	£0.211
P-315	11	8	3.6	£0.243	£0.221	£0.216
P-325	11	8.3	3.6	£0.250	£0.228	£0.223
P-335	11	8.5	3.6	£0.255	£0.233	£0.228





## DYMET ALLOYS SAW TIP PRICE LIST

**Grades:**

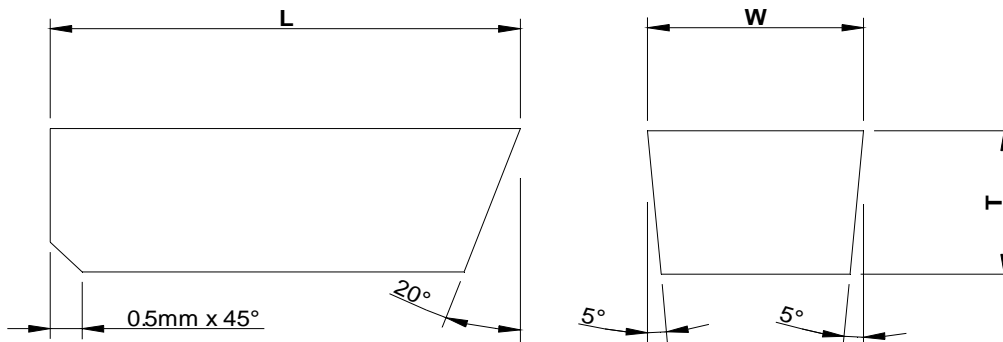
Standard 6% cobalt.  
Steel cutting and alternative grades available to special order.

**Quantity:**

Saw Tips are available in multiples of 500-off.  
Please note our minimum order value £50-00.

### N-SERIES SAW TIPS READY TO BRAZE(dimensions in mm)

DYMET CODE	Length	KERF Width	Thickness	500-2000	2500-5000	>5500
N-085	9.5	2.1	3.2	£0.149	£0.125	£0.118
N-095	9.5	2.4	3.2	£0.156	£0.132	£0.125
N-105	9.5	2.7	3.2	£0.162	£0.139	£0.131
N-115	9.5	2.9	3.2	£0.167	£0.143	£0.136
N-125	9.5	3.2	3.2	£0.173	£0.149	£0.142
N-135	9.5	3.4	3.2	£0.178	£0.154	£0.147
N-145	9.5	3.7	3.2	£0.184	£0.160	£0.153
N-155	9.5	3.9	3.2	£0.188	£0.165	£0.157
N-165	9.5	4.2	3.2	£0.195	£0.171	£0.164
N-175	9.5	4.5	3.2	£0.201	£0.178	£0.171
N-185	9.5	4.7	3.2	£0.206	£0.182	£0.175
N-195	9.5	5	3.2	£0.212	£0.189	£0.181
N-205	9.5	5.2	3.2	£0.217	£0.193	£0.186
N-215	9.5	5.5	3.2	£0.223	£0.200	£0.192
N-225	9.5	5.7	3.2	£0.228	£0.204	£0.197
N-235	9.5	6	3.2	£0.234	£0.210	£0.203
N-245	9.5	6.2	3.2	£0.239	£0.215	£0.208
N-255	9.5	6.5	3.2	£0.245	£0.221	£0.214
N-265	9.5	6.7	3.2	£0.249	£0.226	£0.218
N-275	9.5	7	3.2	£0.256	£0.232	£0.225
N-285	9.5	7.2	3.2	£0.260	£0.237	£0.229
N-295	9.5	7.5	3.2	£0.267	£0.243	£0.236
N-305	9.5	7.8	3.2	£0.273	£0.250	£0.242
N-315	9.5	8	3.2	£0.278	£0.254	£0.247





## DYMET ALLOYS SAW TIP PRICE LIST

**Grades:**

Standard 6% cobalt.  
Steel cutting and alternative grades available to special order.

**Quantity:**

Please note our minimum order value £50-00.

### GROOVER TIPS READY TO BRAZE

DYMET CODE	Length	KERF Width	Thickness	0 - 100	101 - 500	>501
A-0200	12.8	2MM	4.3	£0.279	£0.191	£0.149
A-0300	12.8	3MM	4.3	£0.311	£0.224	£0.181
A-0317	12.8	1/8"	4.3	£0.316	£0.228	£0.185
A-0400	12.8	4MM	4.3	£0.344	£0.257	£0.214
A-0476	12.8	3/16"	4.3	£0.369	£0.282	£0.239
A-0500	12.8	5MM	4.3	£0.377	£0.290	£0.247
A-0600	12.8	6MM	4.3	£0.410	£0.323	£0.280
A-0635	12.8	1/4"	4.3	£0.422	£0.334	£0.291
A-0700	12.8	7MM	4.3	£0.443	£0.356	£0.313
A-0794	12.8	5/16"	4.3	£0.474	£0.387	£0.344
A-0953	12.8	3/8"	4.3	£0.525	£0.438	£0.395
A-1000	12.8	10MM	4.3	£0.541	£0.454	£0.411
A-1111	12.8	7/16"	4.3	£0.578	£0.490	£0.447
A-1200	12.8	12MM	4.3	£0.607	£0.520	£0.477
A-1270	12.8	1/2"	4.3	£0.630	£0.543	£0.500
A-1300	12.8	13MM	4.3	£0.640	£0.553	£0.510
A-1429	12.8	9/16	4.3	£0.682	£0.595	£0.552
A-1588	12.8	5/8"	4.3	£0.735	£0.648	£0.605
A-1748	12.8	11/16"	4.3	£0.786	£0.699	£0.656
A-1800	12.8	18MM	4.3	£0.804	£0.717	£0.674
A-1903	12.8	3/4"	4.3	£0.839	£0.752	£0.709

Other sizes are available to special order. Price on application.

